



### SPRING AND SUMMER

Monday-Friday 8am-5pm  
Saturday 8am-3pm  
Closed Sundays

### FALL AND WINTER

Monday-Friday 8am-4pm  
Saturday 8am-3pm  
Closed Sundays

### CLOSED THE FOLLOWING MAJOR HOLIDAYS

Memorial Day

Labor Day

Thanksgiving - *November 27th thru 30th*

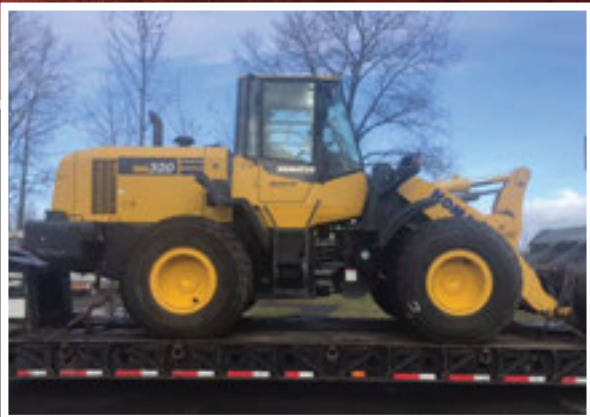
Christmas

New Year's Day

# WE ACCEPT CLEAN FILL DIRT



Scan to Visit  
Our Website



**WALKER DEVELOPMENTS  
LANDSCAPE SUPPLY**

**360-740-7445**

1951 N. National Avenue • Chehalis, WA 98532

[walkerdevelopmentslandscape.com](http://walkerdevelopmentslandscape.com)

# WALKER DEVELOPMENTS LANDSCAPE SUPPLY

## 2025 **RETAIL** PRICING



**360-740-7445**

[walkerdevelopmentslandscape.com](http://walkerdevelopmentslandscape.com)

1951 N. National Avenue  
Chehalis, WA 98532

[cdirtwalker@yahoo.com](mailto:cdirtwalker@yahoo.com)

**PRODUCTS**

	U-HAUL FULL YARD	U HAUL ½ YARD	DELIVERED PRICE PER YD
N.W. Garden Blend (4 way mix)	\$46.00	\$28.00	\$51.00
N.W. Supreme 60/40	\$49.00	\$32.00	\$53.00
Potting Soil (screened twice)	\$44.00	\$33.00	\$48.00
Clean Fill Dirt*****	\$25.00	\$19.00	\$32.00
Screened Top Soil*****	\$44.00	\$27.00	\$49.00
Potting Soil Base*****	\$41.00	\$24.00	\$46.00

**SOIL AMENDMENTS**

Chicken Compost (Delivery Only)			\$56.00
Dairy Compost****	\$37.00	\$23.00	\$41.00

**BARK**

Fresh Ground Fir (single grind) (med)	\$29.00	\$20.00	\$34.00
Sliverless Alder Bark (fine)	\$32.00	\$22.00	\$37.00
Fine Fir (double grind) (fine)	\$32.00	\$22.00	\$37.00
Trail Bark (fir)	\$35.00	\$24.00	\$40.00
Small Nuggets (fir)	\$46.00	\$29.00	\$50.00
Medium Nuggets (fir)	\$46.00	\$29.00	\$50.00
Hemlock Bark (med)	\$32.00	\$22.00	\$37.00
Cedar Chips	\$37.00	\$25.00	\$43.00
Ground Cover	\$19.00	\$14.00	\$26.00
Sawdust (fir)	\$19.00	\$14.00	\$26.00
½" Minus Fir Chips	\$19.00	\$14.00	\$26.00
Black Mulch	\$45.00	\$34.00	\$48.00

**CRUSHED ROCK**

Black Crushed ⅝"	\$38.00	\$25.00	\$41.00
Black Crushed 1 ¼"	\$38.00	\$25.00	\$41.00
Black Crushed 3"	\$38.00	\$25.00	\$41.00
Gray ¾" Clean	\$43.00	\$30.00	\$46.00
Gray Crushed ⅝"	\$38.00	\$25.00	\$41.00
Gray Crushed 1 ¼"**** (Delivery Only)			\$41.00
Ditch Rock 4"-6"	\$47.00	\$34.00	\$53.00

**ROUND ROCK**

Washed Sand	\$44.00	\$31.00	\$49.00
Pea Gravel	\$38.00	\$25.00	\$42.00
Drain Rock ¾"	\$36.00	\$24.00	\$40.00
Drain Rock 1 ½"	\$36.00	\$24.00	\$40.00
Fish Rock 2"-6"	\$45.00	\$32.00	\$50.00
River Rock 5"-10"	\$45.00	\$32.00	\$50.00

**LARGE ROCK**

Garden Rock 8"-18"	\$68.00	\$47.00	\$77.00
Rip Rap 24"+	By the piece	\$50-\$100	Dump Truck Load \$800
Bull Rock (Large Round)	By the piece	\$50-\$100	Dump Truck Load \$900
Granite Boulders \$30-\$70 each			Dump Truck Load \$900
Column Boulders \$100-\$300 each (Price by the piece)			

**DECORATIVE ROCK**

Red Pumice	\$61.00	\$39.00	\$68.00
White Pumice ⅛" - ⅜"	\$68.00	\$46.00	\$72.00
Salt & Pepper 1 ¼"	\$123.00	\$70.00	\$129.00
Salt & Pepper 3"	\$123.00	\$70.00	\$129.00
Red Pepper 1 ¼"-2"	\$58.00	\$40.00	\$63.00
China White 1 ¼"****	\$241.00	\$151.00	\$256.00

**2025 PRICE SHEET**

SOME PRODUCTS CHECK FOR AVAILABILITY \*\*\*\*\*  
 RECYCLED ASPHALT\* RECYCLED CONCRETE\*  
 ALL PRICES SUBJECT TO CHANGE  
 SHORT LOAD FEE FOR LESS THAN 10 YARDS DELIVERED

**5 Gallon Bucket \$8****10 Gallon Tote \$12****ANY DECORATIVE ROCK****5 Gallon Bucket \$15****10 Gallon Tote \$20****CHINA WHITE****5 Gallon Bucket \$25****LANDSCAPE FABRIC****3 x 50 \$35.99 • 4 x 50 \$43.99****6 x 100 \$94.99****DRIVEWAY FABRIC (GEOTEX)****12.5 x 250 \$610 or \$3 per foot****SHORT LOAD FEE FOR DELIVERIES  
 LESS THAN 10 YARDS****1-2 Yards \$100 • 3-4 Yards \$65 • 5-9 Yards \$45  
 + product + Tax****WALKER TRUCKING INC.****Trucks For Hire****3 Axle Standard Dump Truck Hauls Up To 15 Yds****\$125.00 Per Hour****5 Axle Super Solo Dump Truck Hauls Up To 30 Yds****\$145.00 Per Hour****5 Axle End Dump Or Walking Floor Trailer****\$145.00 Per Hour**